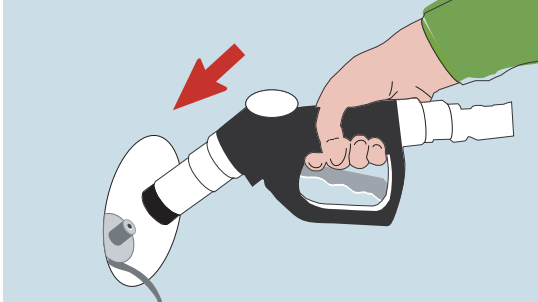


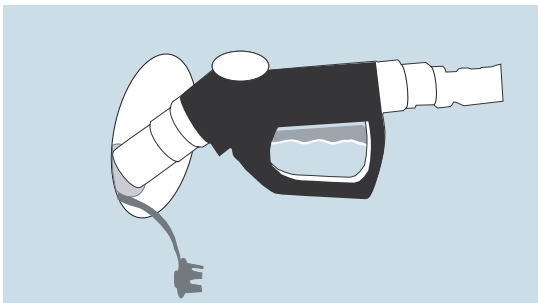
Please observe our [operating instructions 2004/01/00388](#) and comply with the following operation notes in the indicated order:



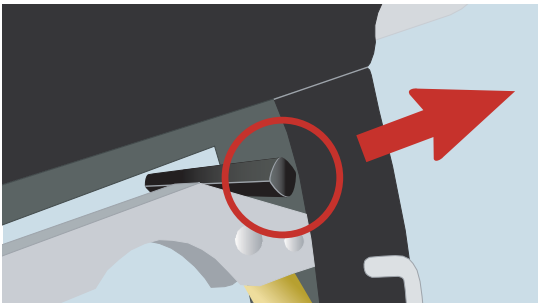
Place the fuelling nozzle onto the receptacle until it stops.



Hold the fuelling nozzle steady and retract the trigger until it snaps in.



Refuelling can start.



After refuelling
→ release the latch,
wait for the venting (about 3 seconds),
and remove the fuelling nozzle.