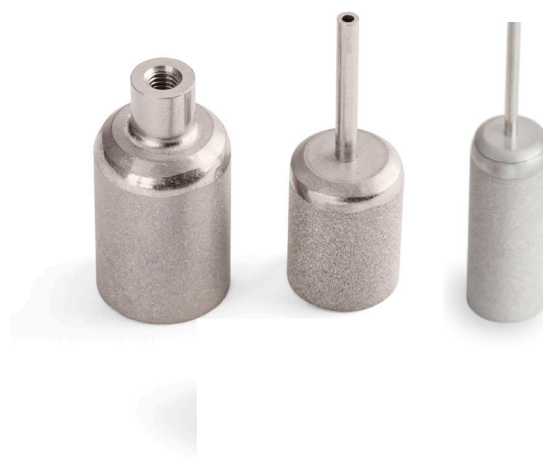


PerfectPeak® Solvent Inlet Filters offer the **HIGHEST EFFICIENCY** and **DURABILITY** with a **WIDE RANGE OF MATERIALS** at the **LOWEST PRICES**

DESCRIPTION

PerfectPeak® Solvent Inlet Filters offer a wide variety of options and benefits to meet your desired HPLC/ UHPLC system protection:

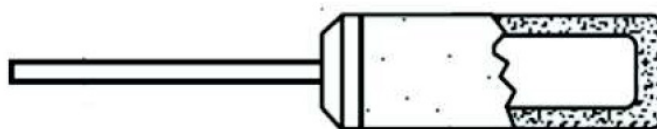
- Standard 2 and 10 μm porosity for HPLC, with option of 0.5 μm for UHPLC
- Variety of alloys such as stainless steel for standard use, as well as titanium or corrosion resistant Hastelloy® for bio-inert applications
- Uniform pore distribution and anti-clog design to keep your equipment running at full capacity
- All metal construction for maximum durability



CONNECTION TYPES

Stem Fitting

Adapted for push on flexible tubing or PEEK compression fittings for ease of use.



Compression Fitting

Complete with a compression-type tube connection.



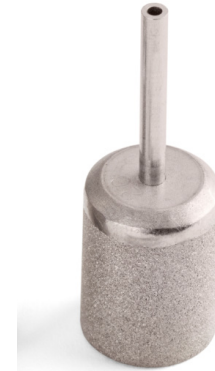
ORDERING INFORMATION

TEESING

WWW.TEESING.COM

Standard Tube Stem Solvent Filters - Stainless Steel (4 pk)

Item Number	Fitting Size	Pore Size	Filter OD
4001120-005	1/16" Stem	0.5 µm	1/2"
4001120-020	1/16" Stem	2 µm	1/2"
4001120-100	1/16" Stem	10 µm	1/2"
4001130-005	1/8" Stem	0.5 µm	1/2"
4001130-020	1/8" Stem	2 µm	1/2"
4001130-100	1/8" Stem	10 µm	1/2"



Standard Threaded Solvent Filters - Stainless Steel (4 pk)



Item Number	Fitting Size	Pore Size	Filter OD
4001100-005	1/16" Compression	0.5 µm	1/2"
4001100-020	1/16" Compression	2 µm	1/2"
4001100-100	1/16" Compression	10 µm	1/2"
4001110-005	1/8" Compression	0.5 µm	1/2"
4001110-020	1/8" Compression	2 µm	1/2"
4001110-100	1/8" Compression	10 µm	1/2"

Bioinert Tube Stem Solvent Filters - Titanium (4 pk)

Item Number	Fitting Size	Pore Size	Filter OD
4001135-100	1/8" Tube	10 µm	1/2"



Other Information

- All products are available in titanium and Hastelloy® versions
- Custom dimensions, alloys, pore sizes, and fittings are available upon request
- Contact us at info@mottcorp.com to reach a sales rep for more information