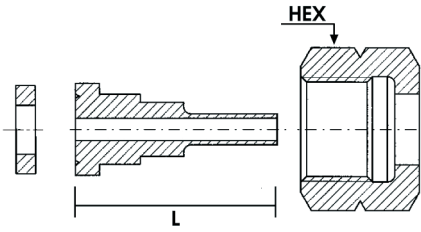


STANDARD INLET CONNECTORS | CGA

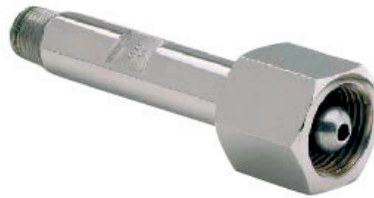
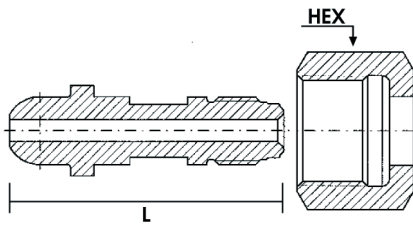
CGA V-1 Ref. Number	End Connection	Ref Number Nipple, Nut, Gasket	Length (L)	Internal Surface Finish (µm (µ inch))	Ref Number Nipple	Ref Number Nut	HEX Nut	Ref Number Gasket (Material)	Ref Number Gasket (Material)	Ref Number Gasket (Material)	Nipple Available Material				
								Stainless steel only	PCDF		PCTFE	MM	S	V	N
170	BW 1/4"	40-170-4BW-	1-1/4"	Ra 0.2 (8 Ra) EP	10-170-4BW-	20-170-N-	1/16"	30-PV-1	30-PC-1		0	•	×	×	×
	NPT 1/4"	40-170-4N-	1-1/4"	Ra 0.8 (32 Ra)	10-170-4N-						•	×	×	×	•
180	BW 1/4"	40-180-4BW-	1-1/4"	Ra 0.2 (8 Ra) EP	10-180-4BW-	20-180-N-	3/4"	30-PV-2	30-PC-2		0	•	×	×	×
	NPT 1/4"	40-180-4N-	1-1/4"	Ra 0.8 (32 Ra)	10-180-4N-						•	×	×	×	•
290	BW 1/4"	40-290-4BW-	2-5/8"	Ra 0.2 (8 Ra) EP	10-290-4BW-	20-290-N-	1"			Metal to Metal sealing (No Gasket)	0	•	×	×	×
	NPT 1/4"	40-290-4N-	2-1/4"	Ra 0.8 (32 Ra)	10-290-4N-						•	×	×	×	•
296	BW 1/4"	40-296-4BW-	2-5/8"	Ra 0.2 (8 Ra) EP	10-296-4BW-	20-296-P-	7/8"			Metal to Metal sealing (No Gasket)	0	•	×	×	×
	FS 1/4"	40-296-4FS-	2-3/4"	Ra 0.2 (8 Ra) EP	10-296-4FS-						0	•	×	×	×
	NPT 1/4"	40-296-4N-	3-1/2"	Ra 0.8 (32 Ra)	10-296-4N-						•	×	×	×	•
320	BW 1/4"	40-320-4BW-	1-3/4"	Ra 0.2 (8 Ra) EP	10-320-4BW-	20-320-N-	1 1/8"	30-PV-3	30-PC-3		0	•	×	×	×
	FS 1/4"	40-320-4FS-	1-3/4"	Ra 0.2 (8 Ra) EP	10-320-4FS-						0	•	×	×	×
	NPT 1/4"	40-320-4N-	2-1/2"	Ra 0.8 (32 Ra)	10-320-4N-						•	×	×	×	•
326	BW 1/4"	40-326-4BW-	2-1/4"	Ra 0.2 (8 Ra) EP	10-326-4BW-	20-326-N-	1 1/8"			Metal to Metal sealing (No Gasket)	0	•	×	×	×
	FS 1/4"	40-326-4FS-	2-1/4"	Ra 0.2 (8 Ra) EP	10-326-4FS-						0	•	×	×	×
	NPT 1/4"	40-326-4N-	3"	Ra 0.8 (32 Ra)	10-326-4N-						•	×	×	×	•
330	BW 1/4"	40-330-4BW-	1-3/4"	Ra 0.2 (8 Ra) EP	10-330-4BW-	20-330-N-	1 1/8"	30-PV-3	30-PC-3		0	•	×	×	×
	FS 1/4"	40-330-4FS-	1-3/4"	Ra 0.2 (8 Ra) EP	10-330-4FS-						0	•	×	×	×
	NPT 1/4"	40-330-4N-	2-1/2"	Ra 0.8 (32 Ra)	10-330-4N-						•	×	×	×	•
346	BW 1/4"	40-346-4BW-	2-5/16"	Ra 0.2 (8 Ra) EP	10-346-4BW-	20-346-N-	1 1/8"			Metal to Metal sealing (No Gasket)	0	•	×	×	×
	FS 1/4"	40-346-4FS-	2-1/4"	Ra 0.2 (8 Ra) EP	10-346-4FS-						0	•	×	×	×
	NPT 1/4"	40-346-4N-	3"	Ra 0.8 (32 Ra)	10-346-4N-						•	×	×	×	•
350	BW 1/4"	40-350-4BW-	2-5/16"	Ra 0.2 (8 Ra) EP	10-350-4BW-	20-350-4N-	1 1/8"			Metal to Metal sealing (No Gasket)	0	•	×	×	×
	FS 1/4"	40-350-4FS-	2-1/4"	Ra 0.2 (8 Ra) EP	10-350-4FS-						0	•	×	×	×
	NPT 1/4"	40-350-4N-	3"	Ra 0.8 (32 Ra)	10-350-4N-						•	×	×	×	•
510	BW 1/4"	40-510-4BW-	3"	Ra 0.2 (8 Ra) EP	10-510-4BW-	20-510-P-	1 1/8"			Metal to Metal sealing (No Gasket)	0	•	×	×	×
	FS 1/4"	40-510-4FS-	2-3/4"	Ra 0.2 (8 Ra) EP	10-510-4FS-						0	•	×	×	×
	NPT 1/4"	40-510-4N-	3-1/2"	Ra 0.8 (32 Ra)	10-510-4N-						•	×	×	×	•
540	BW 1/4"	40-540-4BW-	2-1/4"	Ra 0.2 (8 Ra) EP	10-510-4BW-	20-540-N-	1 1/8"			Metal to Metal sealing (No Gasket)	0	•	×	×	×
	FS 1/4"	40-540-4FS-	2-1/4"	Ra 0.2 (8 Ra) EP	10-510-4FS-						0	•	×	×	×
	NPT 1/4"	40-540-4N-	3"	Ra 0.8 (32 Ra)	10-510-4N-						•	×	×	×	•
580	BW 1/4"	40-580-4BW-	2-5/8"	Ra 0.2 (8 Ra) EP	10-580-4BW-	20-580-P-	1 1/8"			Metal to Metal sealing (No Gasket)	0	•	×	×	×
	FS 1/4"	40-580-4FS-	2-3/4"	Ra 0.2 (8 Ra) EP	10-580-4FS-						0	•	×	×	×
	NPT 1/4"	40-580-4N-	3-1/2"	Ra 0.8 (32 Ra)	10-580-4N-						•	×	×	×	•
590	BW 1/4"	40-590-4BW-	2-5/8"	Ra 0.2 (8 Ra) EP	10-590-4BW-	20-590-P-	1 1/4"			Metal to Metal sealing (No Gasket)	0	•	×	×	×
	FS 1/4"	40-590-4FS-	2-3/4"	Ra 0.2 (8 Ra) EP	10-590-4FS-						0	•	×	×	×
	NPT 1/4"	40-590-4N-	3-1/2"	Ra 0.8 (32 Ra)	10-590-4N-						•	×	×	×	•
660	BW 1/4"	40-660-4BW-	2-3/16"	Ra 0.2 (8 Ra) EP	10-660-4BW-	20-660-N-	1 1/4"	30-PV-4	30-PC-4		0	•	0	0	×
	FS 1/4"	40-660-4FS-	2-7/8"	Ra 0.2 (8 Ra) EP	10-660-4FS-						0	•	0	0	×
	NPT 1/4"	40-660-4N-	2-5/8"	Ra 0.8 (32 Ra)	10-660-4N-						•	×	0	0	•
670	BW 1/4"	40-670-4BW-	2-3/16"	Ra 0.2 (8 Ra) EP	10-670-4BW-	20-670-N-	1 1/4"	30-PV-4	30-PC-4		0	•	0	0	×
	FS 1/4"	40-670-4FS-	1-7/8"	Ra 0.2 (8 Ra) EP	10-670-4FS-						0	•	0	0	×
	NPT 1/4"	40-670-4N-	2-5/8"	Ra 0.8 (32 Ra)	10-670-4N-						•	×	0	0	•
677	BW 1/4"	40-677-4BW-	2"	Ra 0.2 (8 Ra) EP	10-677-4BW-	20-677-N-	1 1/4"			Metal to Metal sealing (No Gasket)	0	•	0	0	×
	FS 1/4"	40-677-4FS-	1-7/8"	Ra 0.2 (8 Ra) EP	10-677-4FS-						0	•	0	0	×
	NPT 1/4"	40-677-4N-	2-3/8"	Ra 0.8 (32 Ra)	10-677-4N-						•	×	0	0	•
678	BW 1/4"	40-678-4BW-	2-1/2"	Ra 0.2 (8 Ra) EP	10-678-4BW-	20-678-N-	1 1/4"	30-PV-5	30-PC-5		0	•	0	0	×
	FS 1/4"	40-678-4FS-	2"	Ra 0.2 (8 Ra) EP	10-678-4FS-						0	•	0	0	×
	NPT 1/4"	40-678-4N-	2-3/8"	Ra 0.8 (32 Ra)	10-678-4N-						•	×	0	0	•
679	BW 1/4"	40-679-4BW-	2-1/2"	Ra 0.2 (8 Ra) EP	10-679-4BW-	20-679-N-	1 1/4"	30-PV-5	30-PC-5		0	•	0	0	×
	FS 1/4"	40-679-4FS-	2"	Ra 0.2 (8 Ra) EP	10-679-4FS-						0	•	0	0	×
	NPT 1/4"	40-679-4N-	3"	Ra 0.8 (32 Ra)	10-679-4N-						•	×	0	0	•

• = available
 0 = on request
 × = not available

CGA 330/BUTT WELD



CGA 540/FACE SEAL



CGA 580/NPT

