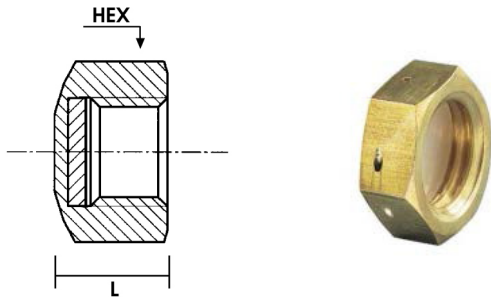


STANDARD CYLINDER VALVES OUTLET SEAL CAPS & PLUGS

DIN 477 Ref. Number	End Connection	Ref Number	Length (L)	HEX Outlet Seal Cap in mm	Fig.	S 303	S 316	B
		Outlet Seal Cap						
1	Outlet Plug	70-DIN1-OC_	14.4 (0.57")	30	1	•	o	•
5	Outlet Cap	70-DIN5-OC_	14.8 (0.58")	32	1	•	o	•
6	Outlet Cap	70-DIN6-OC_	14.4 (0.57")	30	1	•	o	•
7	Outlet Cap	10-DIN7-OC_	14.4 (0.57")	30	1	•	o	•
8	Outlet Cap	70-DIN8-OC_	14.8 (0.58")	32	1	•	o	•
9	Outlet Cap	70-DIN9-OC_	14.4 (0.57")	32	1	•	o	•
10	Outlet Plug	70-DIN10-OC_	14.4 (0.57")	32	1	•	o	•
11	Outlet Cap	70-DIN14-OC_	14.4 (0.57")	22	1	•	o	•
13	Outlet Plug	70-DIN13-OC_	14.4 (0.57")	27	1	•	o	•
14	Outlet Plug	70-DIN14-OC_	14.4 (0.57")	27	1	•	o	•

• = available
o = on request
× = not available

CYLINDER OUTLET SEAL CAPS



CYLINDER OUTLET SEAL PLUGS

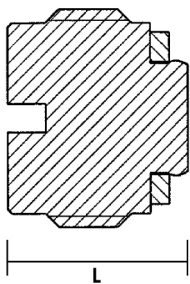


Fig. 2