

# Type **TK10 CNG**

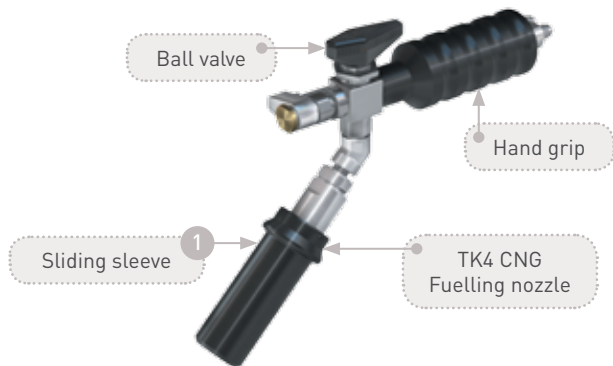
## CNG Fuelling Nozzle

for cars



**General**

**DESCRIPTION**



**Features**

- Compatible with receptacles acc. to NGV1 standard and ISO 14469-1 and 3
- Push-to-connect
- Integrated shut-off valve
- Plastic thermal protection
- Grip position available at 45° or 90°
- Ergonomic design
- WEH® Jaw locking mechanism
- Colour coded sliding sleeve (200 bar / 3,000 psi black, 250 bar / 3,600 psi yellow)
- High-grade materials
- Option: without gas recirculation

The TK10 CNG fuelling nozzle combines user comfort with maximum convenience. The integrated TK4 CNG fuelling nozzle features 'push-to-connect' jaw locking system which automatically moves the sliding sleeve back when making a connection. The ergonomic design of the hand grip enables an easy connection to the receptacle. The hand grip is slightly angled to prevent stresses on the high pressure hose and hose damage due to chafing on the ground. Refuelling starts after opening the ball valve. Closing the ball valve finishes refuelling and the integrated gas recirculation automatically depressurizes the system. The nozzle can then be disconnected by pulling back the sliding sleeve of the TK4 CNG.

On request the type TK10 CNG fuelling nozzle is also available without gas recirculation. The grip position can either be 45° or 90°. The extended construction of the integrated TK4 CNG fuelling nozzle helps in refuelling difficult-to-access receptacles. WEH® Jaws grip symmetrically, avoiding damage to the receptacle profile which could result in leakage. To achieve optimum performance it is recommended that the TK10 CNG fuelling nozzle is used with the WEH® TN1 CNG receptacle.

**Application**

Fuelling nozzle for CNG fast filling of cars to be used with WEH® TN1 CNG receptacles acc. to NGV1 standard and ISO 14469-1 and 3. Operation only by specially trained service personnel. Not for self-service operation!

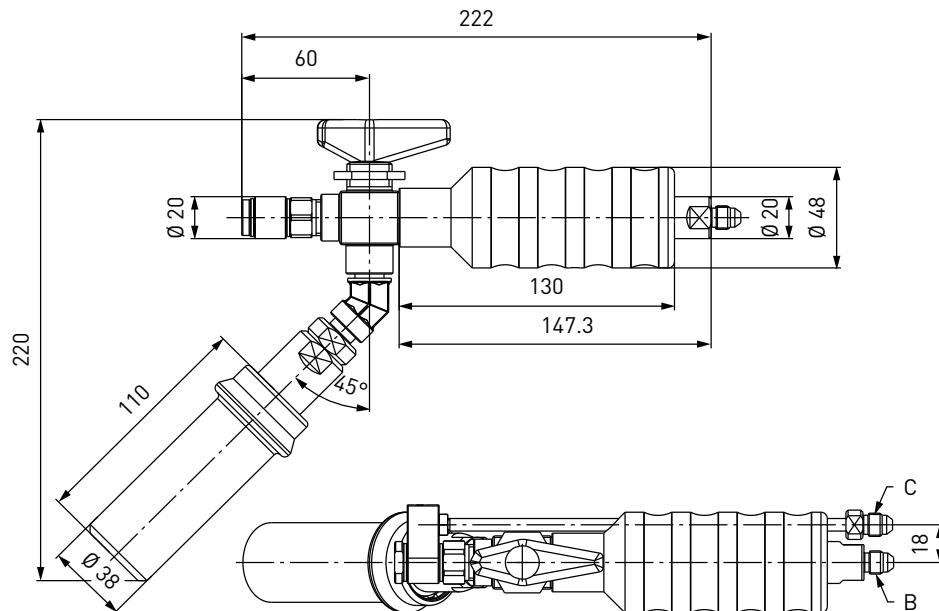
**TECHNICAL DATA**

Characteristic	Basic version	Options
Nominal bore DN	4 mm	On request
Pressure range	B200 acc. to ISO 14469-1 (P30 acc. to ANSI NGV1) PN = 200 bar (3,000 psi)   PS = 300 bar   PT = 450 bar (black) B250 acc. to ISO 14469-3 (P36 acc. to ANSI NGV1) PN = 250 bar (3,600 psi)   PS = 350 bar   PT = 525 bar (yellow)	
Temperature range	-40 °C up to +85 °C [-40 °F up to +185 °F]	On request
Material	Corrosion resistant	On request
Sealing material	Natural gas compatible	On request
Design	With plastic thermal protection, grip position 45° and gas recirculation	Grip position 45° without gas recirculation Grip position 90° without gas recirculation Grip position 90° with gas recirculation
Weight	Approx. 1.3 kg (2.87 lbs.)	
Registration	PED97/23/EC: CE0036 (TK4 CNG) The products comply with ANSI NGV1 (TK4 CNG).	

**Ordering**

**ORDERING** | Fuelling nozzle TK10 CNG with grip position 45°

approx. dimensions (mm)



Part No.	Description	Pressure (PN)	Inlet B (external thread)	Gas recirculation C (external thread)
<b>C1-15973</b>	TK10 CNG with gas recirculation	200 bar / 3,000 psi (black)	UNF 7/16"-20*	UNF 7/16"-20*
<b>C1-88401</b>	TK10 CNG with gas recirculation	250 bar / 3,600 psi (yellow)	UNF 7/16"-20*	UNF 7/16"-20*
<b>C1-15971</b>	TK10 CNG without gas recirculation	200 bar / 3,000 psi (black)	UNF 7/16"-20*	-
<b>C1-106697</b>	TK10 CNG without gas recirculation	250 bar / 3,600 psi (yellow)	UNF 7/16"-20*	-

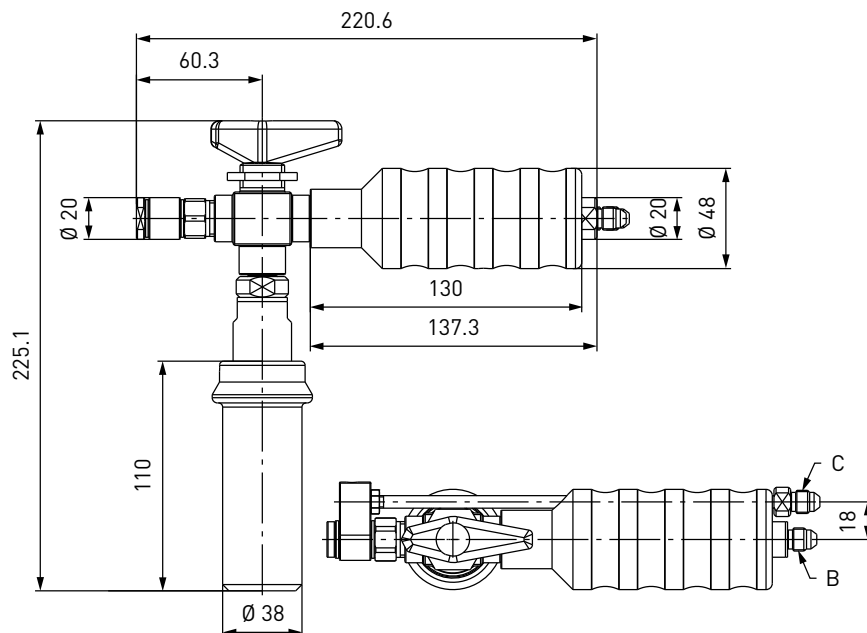
\* acc. to SAE J514, 37°

On request inlet port 'B' is also available with other thread sizes.

**Ordering**

**ORDERING** | Fuelling nozzle TK10 CNG with grip position 90°

approx. dimensions (mm)



Part No.	Description	Pressure (PN)	Inlet B (external thread)	Gas recirculation C (external thread)
<b>C1-15974</b>	TK10 CNG with gas recirculation	200 bar / 3,000 psi (black)	UNF 7/16"-20*	UNF 7/16"-20*
<b>C1-101090</b>	TK10 CNG with gas recirculation	250 bar / 3,600 psi (yellow)	UNF 7/16"-20*	UNF 7/16"-20*
<b>C1-15972</b>	TK10 CNG without gas recirculation	200 bar / 3,000 psi (black)	UNF 7/16"-20*	-
<b>C1-106007</b>	TK10 CNG without gas recirculation	250 bar / 3,600 psi (yellow)	UNF 7/16"-20*	-

\* acc. to SAE J514, 37°

On request inlet port 'B' is also available with other thread sizes.

Please see page 28 in catalogue no. 15 onwards for complete hose assemblies consisting of fuelling nozzle, hose set and breakaway coupling.

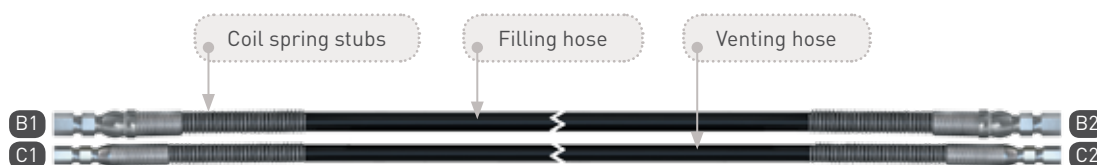
## Ordering

### ACCESSORIES

The following accessories are available for type TK10 CNG:

#### Hose sets TK10 CNG - TSA1 CNG (filling and venting hose)

Filling and venting hoses for connecting fuelling nozzle and type TSA1 CNG breakaway coupling, complete with fittings and press-fittings supported by coil spring stubs.



Part No.	Filling hose B1/B2 (internal thread)	Venting hose C1/C2 (internal thread)	Hose length
<b>C1-106385</b>	UNF 7/16"-20*	UNF 7/16"-20*	3 m
<b>C1-106386</b>	UNF 7/16"-20*	UNF 7/16"-20*	4 m
<b>C1-106387</b>	UNF 7/16"-20*	UNF 7/16"-20*	5 m

\* acc. to SAE J514, 37°

#### Hose sets TK10 CNG - TSA2 CNG (filling and venting hose)

Filling and venting hoses for connecting fuelling nozzle / dispenser and type TSA2 CNG inline breakaway coupling, complete with fittings and press-fittings supported by coil spring stubs.

Part No.	Filling hose B1/B2 (internal thread)	Venting hose C1/C2 (internal thread)	Hose length
<b>C1-106395</b>	UNF 7/16"-20*	UNF 7/16"-20*	2.5   0.5 m
<b>C1-106396</b>	UNF 7/16"-20*	UNF 7/16"-20*	3.5   0.5 m
<b>C1-106397</b>	UNF 7/16"-20*	UNF 7/16"-20*	4.5   0.5 m

\* acc. to SAE J514, 37°

## Ordering

### Filling hoses

Filling hoses for connecting fuelling nozzle (without gas recirculation) and dispenser, complete with fittings and press-fittings supported by coil spring stubs.



Part No.	Filling hose B1/B2 (internal thread)	Hose length
<b>E68-1032-3000</b>	UNF 7/16"-20*	3 m
<b>E68-1032-4000</b>	UNF 7/16"-20*	4 m
<b>E68-1032-5000</b>	UNF 7/16"-20*	5 m

\* acc. to SAE J514, 37°

### Fittings

Stainless steel fittings for connecting the media inlet 'B' to the filling hose or the gas recirculation inlet 'C' to the venting hose.

Part No.	Description	Connection fuelling nozzle	Connection filling hose
<b>E80-648P</b>	Fitting	UNF 7/16"-20* internal thread	UNF 9/16"-18* external thread
<b>C1-32692</b>	Fitting	UNF 7/16"-20* internal thread	UNF 7/16"-20* external thread
<b>C1-62138</b>	Fitting	UNF 7/16"-20* internal thread	NPT 1/4" internal thread

\* acc. to SAE J514, 37°

Please see page 126 in catalogue no. 15 onwards for a detailed overview on all available fittings.

## Ordering

### Spare parts

Various parts are available as spares for type TK10 CNG:



Part No.	Description
<b>C1-127959</b>	1 Spare parts set 200 bar / 3,000 psi (black sliding sleeve incl. metal sleeve and circlip)
<b>C1-127961</b>	1 Spare parts set 250 bar / 3,600 psi (yellow sliding sleeve incl. metal sleeve and circlip)
<b>E99-44923</b>	Maintenance spray

## Other products

### OTHER PRODUCTS

You will find more products in our current catalogue no. 15



Further information on our homepage  
[www.weh.com](http://www.weh.com)

#### » Contacting

For queries and further information, please do not hesitate to contact us.

*Manufacturer:*

**WEH GmbH Gas Technology**

Josef-Henle-Str. 1  
89257 Illertissen / Germany

Phone: +49 7303 95190-0

Fax: +49 7303 95190-9999

eMail: [ngvsales@weh.com](mailto:ngvsales@weh.com)

[www.weh.com](http://www.weh.com)