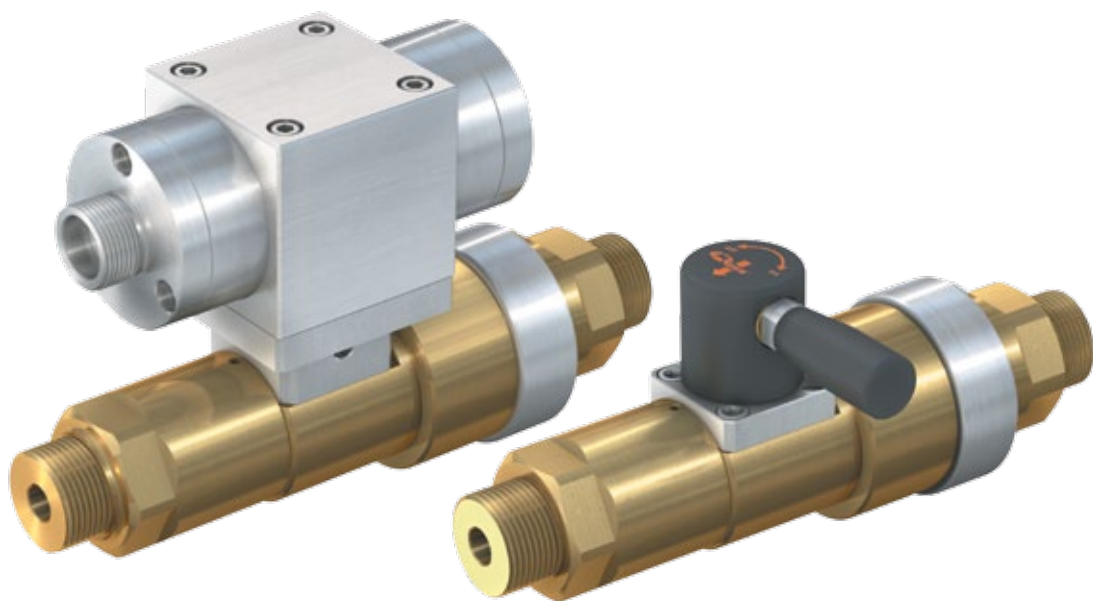


# Typ **TV17GE**

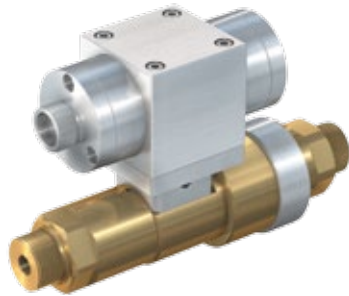
**High pressure valve with automatic venting**

for inert gases up to 420 bar



**General**

**DESCRIPTION**



TV17GE with pneumatic actuation



TV17GE with manual actuation

The high pressure valve type TV17GE is designed as a shut-off valve for pressurized gases. Additionally the outlet port of the valve is vented after closing.

The compact design makes the TV17GE ideal for installation into gas mixing plants. A check valve has to be mounted in the venting line to prevent ambient air from entering the valve outlet when venting.

The valve is available with pneumatic actuator (normal position: NC or NO) or manual lever.

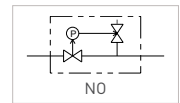
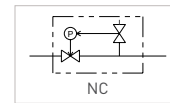
**TECHNICAL DATA**

Characteristic	Basic version
<b>Functions</b>	
Automatic venting	Yes
Check valve	No
Vacuum operation	Yes
Flow direction	One-way (B1 → B2)
Actuation	Pneumatically for automatic control (e.g. via SPS) or manual with actuation lever
<b>Specifications of valve</b>	
Nominal bore DN	12 mm
Operating pressure PS	Max. 420 bar
Leak rate	$5 \times 10^{-3}$ mbar x l/s
Temperature range	-30 °C up to +60 °C
<b>Specifications of pneumatic actuator</b>	
Pilot pressure port P1	G1/4" internal thread
Venting port P2	G1/8" internal thread
Pilot pressure	6 - 8 bar
Measuring port M	M28x1.5 external thread
<b>Material</b>	
Parts (within media flow)	Brass and stainless steel 1.4305
Inlet valve seal	PEEK
O-rings / back-up rings	EPDM / PTFE / FKM
Springs	Steel 1.4310

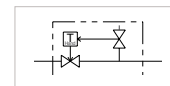
Other designs on request

**Symbols acc. to ISO 1219-1**

pneumatic:



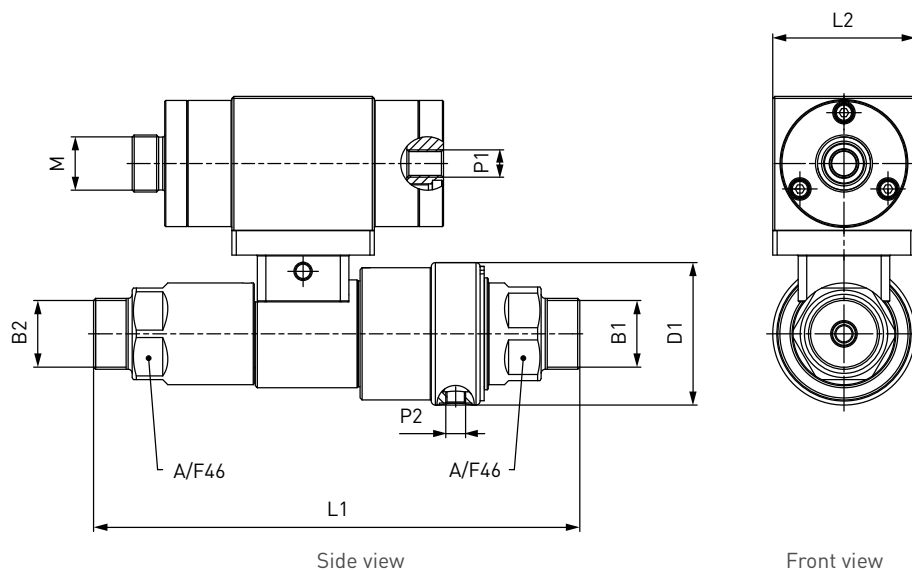
manual:



**Ordering**

**ORDERING** | High pressure valve TV17GE with pneumatic actuation

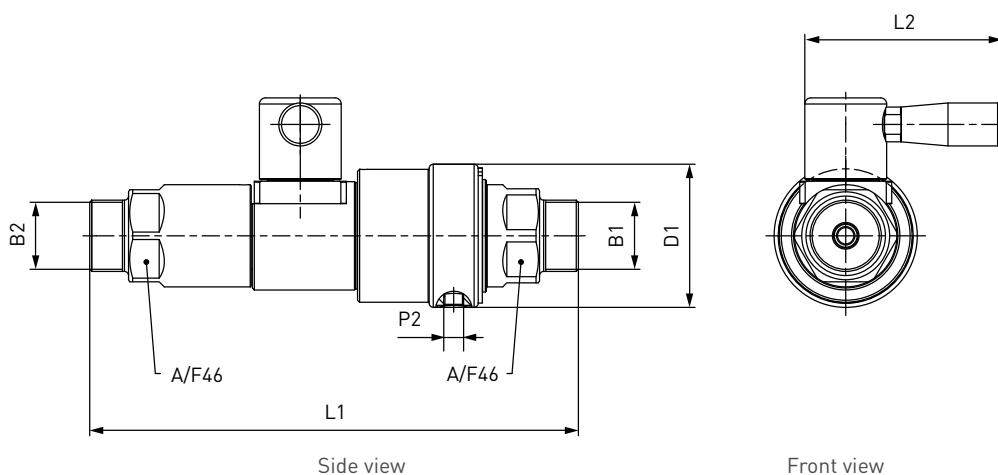
approx. dimensions (mm)



Part No.	DN	Normal position	B1 / B2 (external thread)	L1	L2	D1
C1-117585	12	NC	UNF 1 3/8"-12	239	70	70
C1-117592	12	NO	UNF 1 3/8"-12	239	70	70

**ORDERING** | High pressure valve TV17GE with manual actuation

approx. dimensions (mm)



Part No.	DN	B1 / B2 (external thread)	L1	L2	D1
C1-117589	12	UNF 1 3/8"-12	239	97	70

## Other products

### OTHER PRODUCTS

You will find more products in our current catalogue no. 55



Further information on our homepage  
[www.weh.com](http://www.weh.com)

### » Contacting

For queries and further information, please do not hesitate to contact us.

*Manufacturer:*

**WEH GmbH Precision Connectors**

Josef-Henle-Str. 1  
89257 Illertissen / Germany

Phone: +49 7303 9609-0  
Fax: +49 7303 9609-9999

eMail: [sales@weh.com](mailto:sales@weh.com)  
[www.weh.com](http://www.weh.com)