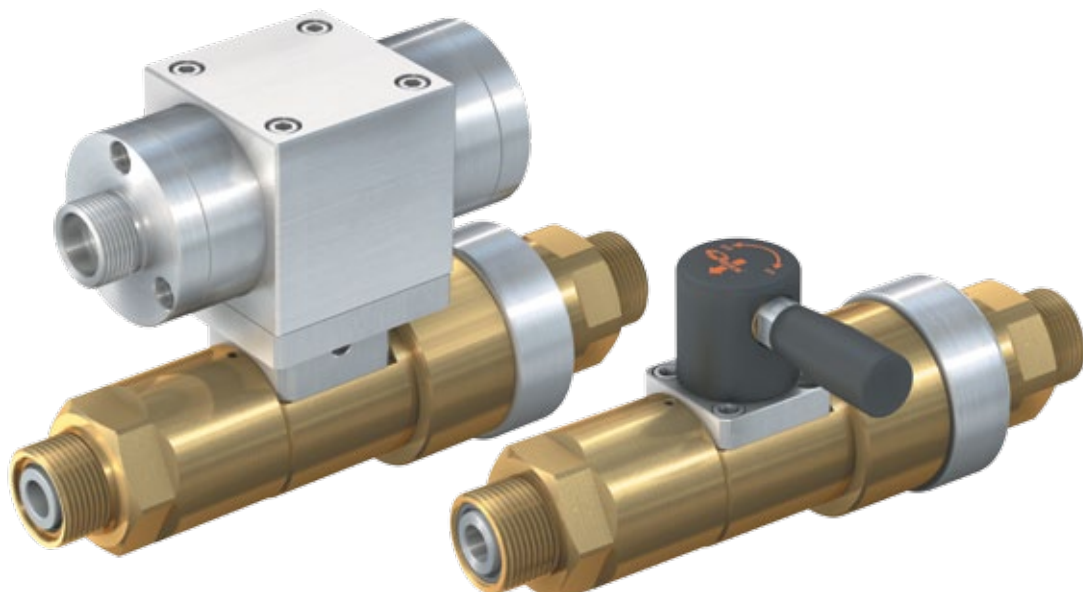


# Type **TV17GER**

**High pressure valve with automatic venting and check valve**

for inert gases up to 420 bar



**General**

**DESCRIPTION**



TV17GER with pneumatic actuation



TV17GER with manual actuation

The Block & Bleed high pressure valve type TV17GER is also designed as a shut-off valve for pressurized gases. The valve automatically vents the space between the shut-off valve and the check valve. Therefore no gases can enter the inlet port. The compact design makes the TV17GER ideal for installation into gas mixing plants. A check valve has to be mounted in the venting line to prevent ambient air from entering the valve outlet when venting. The valve is available with pneumatic actuator or manual lever.

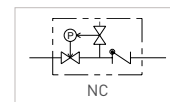
**TECHNICAL DATA**

Characteristic	Basic version
<b>Functions</b>	
Automatic venting	Yes
Check valve	Yes
Vacuum operation	Yes
Flow direction	One-way (B1 → B2)
Actuation	Pneumatically for automatic control (e.g. via SPS) or manual with actuation lever
<b>Specifications of valve</b>	
Nominal bore DN	12 mm
Operating pressure PS	Max. 420 bar
Leak rate	$5 \times 10^{-3}$ mbar x l/s
Temperature range	-30 °C up to +60 °C
<b>Specifications of pneumatic actuator</b>	
Pilot pressure port P1	G1/4" internal thread
Venting port P2	G1/8" internal thread
Pilot pressure	6 - 8 bar
Measuring port M	M28x1.5 external thread
<b>Material</b>	
Parts (within media flow)	Brass and stainless steel 1.4305
Inlet valve seal	PEEK
O-rings / back-up rings	EPDM / PTFE / FKM
Springs	Steel 1.4310

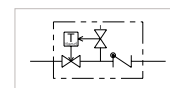
Other designs on request

**Symbols acc. to ISO 1219-1**

pneumatic:



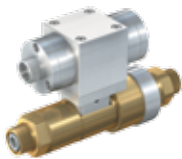
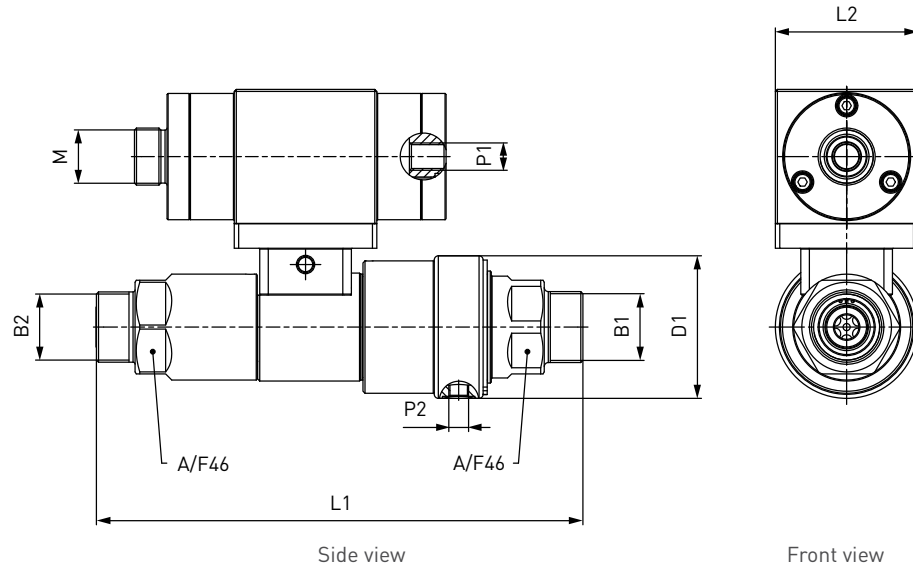
manual:



**Ordering**

**ORDERING** | High pressure valve TV17GER with pneumatic actuation

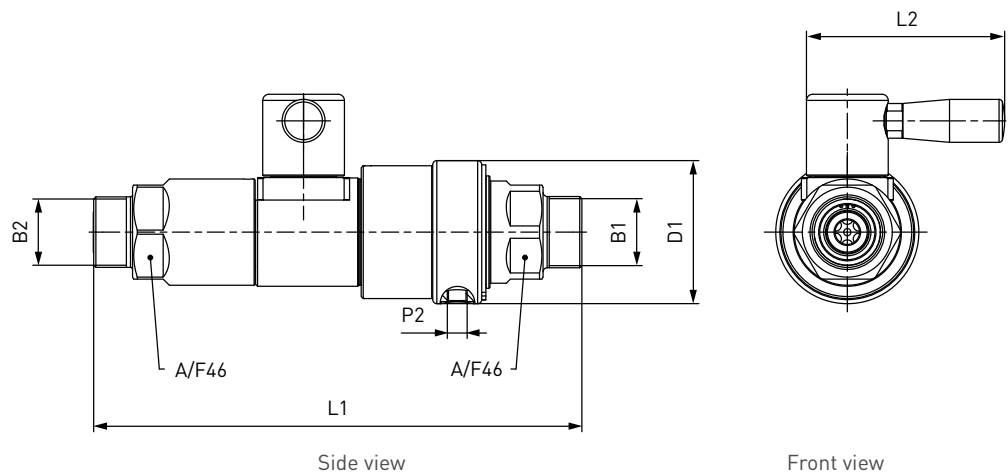
approx. dimensions (mm)



Part No.	DN	Normal position	B1 / B2 (external thread)	L1	L2	D1
<b>C1-117586</b>	12	NC	UNF 1 3/8"-12	239	70	70

**ORDERING** | High pressure valve TV17GER with manual actuation

approx. dimensions (mm)



Part No.	DN	B1 / B2 (external thread)	L1	L2	D1
<b>C1-117590</b>	12	UNF 1 3/8"-12	239	97	70

## Other products

### OTHER PRODUCTS

You will find more products in our current catalogue no. 55



Further information on our homepage  
[www.weh.com](http://www.weh.com)

### » Contacting

For queries and further information, please do not hesitate to contact us.

*Manufacturer:*

**WEH GmbH Precision Connectors**

Josef-Henle-Str. 1  
89257 Illertissen / Germany

Phone: +49 7303 9609-0  
Fax: +49 7303 9609-9999

eMail: [sales@weh.com](mailto:sales@weh.com)  
[www.weh.com](http://www.weh.com)