

Type **TW850**

WEH[®] Connector for pressure and function testing

on components with bead, rim, collar, flange, stub or external thread



General

DESCRIPTION



Features

- Connection in seconds
- No hand tightening required
- WEH® jaw locking mechanism
- High-grade materials
- Special versions possible

The WEH® TW850 Quick Connector simplifies work procedures, shortens test times and improves productivity. Therefore the connector is ideal for high pressure and function testing of components with a bead, rim, collar, flange, stub or external thread.

By using high quality stainless steel the connectors meet the stringent requirements of industrial testing. The TW850 quick connector is designed for a pressure range up to max. 630 bar.

Application

Quick connector for pressure and function testing on components with bead, rim, collar, flange, stub or external thread, e.g. pressure vessels, compressors, heat exchangers, measuring devices, hoses, tubes, tanks, etc.

Note: For using the WEH® Connectors with pneumatic actuation and clamping jaws in an automated system please observe the technical note on page 81 in catalogue no. 35.

TECHNICAL DATA

Characteristic	Basic version
Operating pressure PS*	Vacuum up to max. 630 bar
Temperature range	+5 °C up to +80 °C
Leak rate	1 x 10 ⁻³ mbar x l/s
Material	Corrosion resistant stainless steel
Sealing material	NBR

* depending on application

Other designs on request

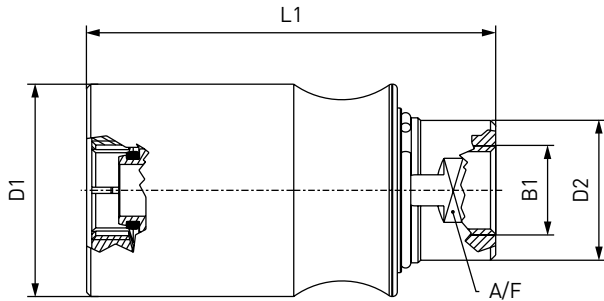
Example of use:



Ordering

ORDERING | WEH® TW850 Quick Connector

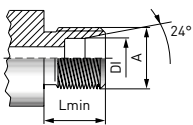
approx. dimensions (mm)



Body size	Inlet B1 (internal thread)	D1	D2	L1	A/F
1	G1/8"	36.0	22.0	75.0	19
2	G3/8"	41.0	27.0	80.0	24
3	G3/8"	46.0	30.0	80.0	27
4	G1/2"	52.0	33.0	120.0	30

Other body sizes on request

Tube connection to DIN 3902 - Threaded stem acc. to DIN 3853, boring form W acc. to DIN 3861



Part No.	Body size	Thread A (external thread)	Max. operating pressure (PS)**	DI max.	Series	Lmin*
C1-109849	1	M10x1.0	100 bar	6.0	LL	8.0
C1-109850	1	M12x1.0	100 bar	8.0	LL	9.0
C1-35809	1	M12x1.5	250 bar	6.0	L	10.0
C1-16988	1	M14x1.5	250 bar	8.0	L	10.0
C1-119138	2	M16x1.5	250 bar	10.0	L	11.0
C1-41109	2	M18x1.5	250 bar	12.0	L	11.0
C1-17601	3	M22x1.5	250 bar	15.0	L	12.0
C1-17804	4	M26x1.5	160 bar	18.0	L	12.0
C1-18610	4	M30x2.0	160 bar	22.0	L	14.0
C1-11299	1	M14x1.5	630 bar	6.0	S	12.0
C1-84789	2	M16x1.5	630 bar	8.0	S	12.0
C1-43001	2	M18x1.5	630 bar	10.0	S	12.0
C1-11418	2	M20x1.5	630 bar	12.0	S	12.0
C1-85074	3	M22x1.5	630 bar	14.0	S	14.0
C1-11635	3	M24x1.5	400 bar	16.0	S	14.0
C1-13281	4	M30x2.0	400 bar	20.0	S	16.0

* Lmin: minimum thread length

** acc. to DIN 2401 part 1

Other connector sizes and versions on request.

Required information for ordering see page 9, catalogue no. 35.

Accessories

ACCESSORIES

The following accessories are available for WEH® TW850:

Screw plug

If the WEH® Connector is to be used as a plug, the media inlet 'B1' will be sealed with a screw plug of stainless steel. It is recommended that the media compatibility of the seal be tested by the customer!



Part No.	Description	Thread (external thread)	Pressure range
W9329	Screw plug (high pressure)	G1/8"	50 - 350 bar
W9331	Screw plug (high pressure)	G3/8"	50 - 350 bar
W9332	Screw plug (high pressure)	G1/2"	50 - 350 bar

Other products

OTHER PRODUCTS

You will find more products in our current catalogue no. 35



Further information on our homepage
www.weh.com

» Contacting

For queries and further information, please do not hesitate to contact us.

Manufacturer:

WEH GmbH Precision Connectors

Josef-Henle-Str. 1
89257 Illertissen / Germany

Phone: +49 7303 9609-0
Fax: +49 7303 9609-9999

Email: sales@weh.com
www.weh.com