



# SELFA

**A total component solution, from source to process**

High pressure line valves, bellows seal type, for high purity reactive gases, pneumatically actuated

# HP

**2005-PM90  
2012-PM130**



## KEY FEATURES

- Small gas absorption and desorption from seal material
- Fully contained seat
- Double walled, laser welded bellows ensure high leak tightness integrity
- Metal to metal sealing to atmosphere
- Secondary sealing through PCTFE packing prevents atmospheric contamination in case of bellows failure
- Checkport allows on line monitoring of bellows tightness
- Visual indication of valve position (open/closed)
- Normally closed (NF)
- Actuator operating pressure: 5-7 bar

## STANDARD SPECIFICATION

|                                   |  |
|-----------------------------------|--|
| Working pressure p <sub>max</sub> | See characteristics  |
| Temperature range                 | -20°C to +80°C   |
| Helium leak rate                  | at p <sub>max</sub> :  |
| • internal                        | 10 <sup>-9</sup> mbarl/sec                                     |
| • external                        | 10 <sup>-9</sup> mbarl/sec                                     |
| Flow coefficient Cv               | 0.72-1.9   |
| Nominal seat diameter             | 6, 8, 12 mm  |
| Weight                            | See below  |
| Material                          |  |
| • body                            | 316 L  |
| • bellows                         | 316 L  |
| • seat                            | PCTFE  |
| • actuator                        | anodized aluminium<br>+ backed liquid spray<br>coating in grey |



**SELFA**

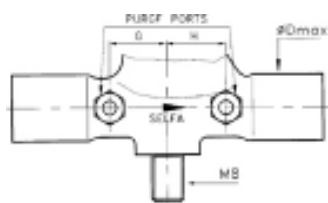
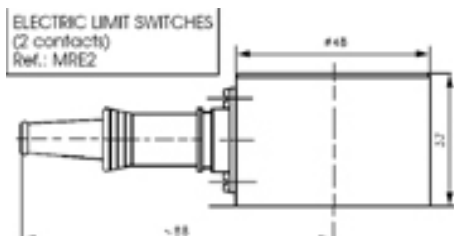
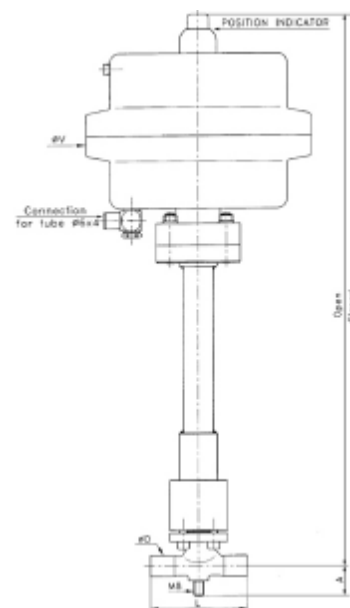
**HP**  
2005-PM90  
2012-PM130

**BASIC MODELS**

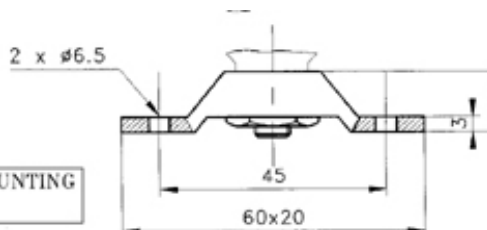
- Butt weld connections
- Surface finish Ra 0.4µm
- Cleaning according to ST-017
- Passivation

**OPTIONS**

- GAZEL®/VCR® connection
- Purge ports GAZEL®/VCR®
- Electropolished surfaces Ra 0.2 µm or 0.4 µm (ex: EP 0.2)
- Microcleaning for high purity application according to ST-020
- Vespel seat - Stainless steel seat
- Back panel mounting (Ref: FP)
- Electric limit switches (Ref: MRE2)
- Normally open (NO)



**BACK MOUNTING**  
Ref: FP



**ORDERING**

When ordering, please specify:

- Series number
  - Connections
  - Type of gas
  - Example: HP 2008 - I/K - BW 3/8" - BW 3/8" - EP 0.4 - Oxygen (See attached order template)
- Inlet - Outlet

**CHARACTERISTICS**

dimensions in mm

| Valves        | Pmax | DN | Cv   | Weight kg | L   | A  | G  | H  | ØV  | Open  | Closed | D max |
|---------------|------|----|------|-----------|-----|----|----|----|-----|-------|--------|-------|
| HP 2005 PM90  | 200  | 6  | 0.72 | 3         | 90  | 24 | 15 | 15 | 129 | 209.5 | 208    | 17    |
| HP 2005 PM130 | 240  | 6  | 0.72 | 7         | 90  | 24 | 15 | 15 | 185 | 263.5 | 262    | 17    |
| HP 2008 PM90  | 175  | 8  | 1.02 | 3         | 90  | 24 | 15 | 15 | 129 | 209.5 | 208    | 17    |
| HP 2008 PM130 | 200  | 8  | 1.02 | 7         | 90  | 24 | 15 | 15 | 185 | 263.5 | 262    | 17    |
| HP 2012 PM130 | 200  | 12 | 1.9  | 7.5       | 140 | 30 | 30 | 30 | 185 | 284.5 | 282    | 24    |

Other dimensions upon request



www.rotarex.com

**SELFA S.A.**

24, route de Diekirch - B.P. 19 L-7505 Lintgen, G.-D. of Luxembourg (EU)

**ISO 9001  
CERTIFIED**

Tel.: +352 32 78 32 - 401

Fax: +352 32 78 32 - 322

\*All GAZEL® Face Seals are VCR® compatible. VCR® is a registered trade mark of CAJON CO., HASILOY® is a registered trade mark of CABOT Corp., Kel-F® is a registered trade mark of 3M company, Vespel® is a registered trade mark of DUPONT, ELGILOY® is a registered trade mark of ELGILOY Company.

Droits de modifications réservés / All rights of change reserved / Änderungsrechte vorbehalten