

# Type **TW57**

## **WEH**<sup>®</sup> Connector for filling of gas cylinders

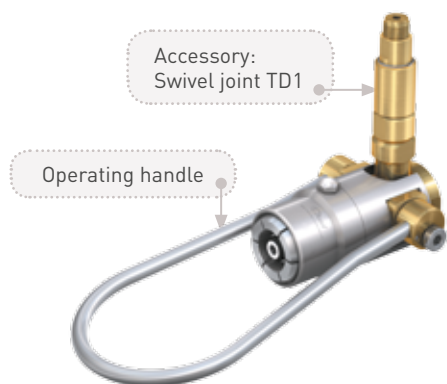
with male thread (with or without a residual pressure valve)

US Patent No. 5,575,510



## General

### DESCRIPTION



#### Features

- For gas cylinders with male thread
- Version for **residual pressure valves or non-residual pressure valves** available
- Connection in seconds
- No hand tightening required
- Easy to connect
- Right-hand and left-hand operation
- Suitable for pallet filling
- WEH® Jaw locking mechanism
- Compact design
- High-grade materials
- US Patent No. 5,575,510

The type TW57 quick connector for gas cylinder valves with male thread provides a pressure-tight connection in seconds. The split collet design system locks securely onto the cylinder valve thread and seals tightly.

#### Safety features

A fully developed design with simple actuation controlling the functioning of the gas connector.

The quick connector cannot be disconnected under pressure because a special safety peg protrudes and locks the connector against removal.

Type TW57 for oxygen has venting bores (see opposite picture) in the front sleeve for lateral venting of gas in case of accidental gas leakage, thus preventing pressure built-up in the connector.



TW57 with RPV pin and venting bores

The TW57 is available for 3,000 psi and 4,350 psi systems.

This quick connector is available for gas cylinder valves acc. to CGA 540, others on request. Connectors for oxygen applications are oxygen cleaned and free of oil and grease.

#### Application

Quick connector for filling of gas cylinders with male thread (with or without a residual pressure valve).

### TECHNICAL DATA

Characteristic	Basic version
Pressure range	PN = 3,000 psi   PS = 3,600 psi   PT = 5,440 psi PN = 4,350 psi   PS = 5,440 psi   PT = 8,195 psi
Temperature range	+41 °F up to +176 °F +41 °F up to +140 °F (O <sub>2</sub> )
Connection A	Male thread connection acc. to CGA 540
Medium	Oxygen, nitrogen, CO <sub>2</sub> , air, inert gases, medical gases
Actuation	Manual actuation via operating handle (handle depending on type of gas cylinder)
Material	Corrosion resistant stainless steel, brass
Sealing material	Acc. to gas type
Design	With or without RPV pin
Registration	PED97/23/EC: CE0036 Safety factor 1:4 acc. to CRN 0A14991.5 (non-RPV) and CRN 0A15073.5 (RPV) Adiabatic ignition test available

Other designs on request

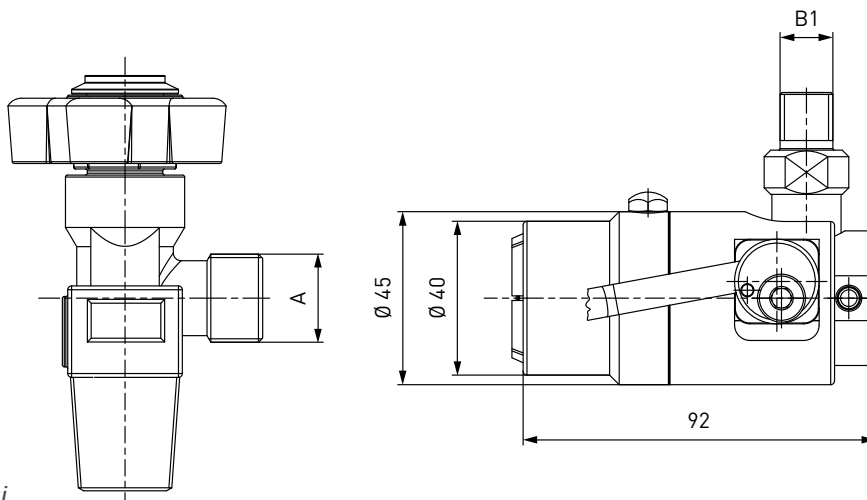
#### Example of use:



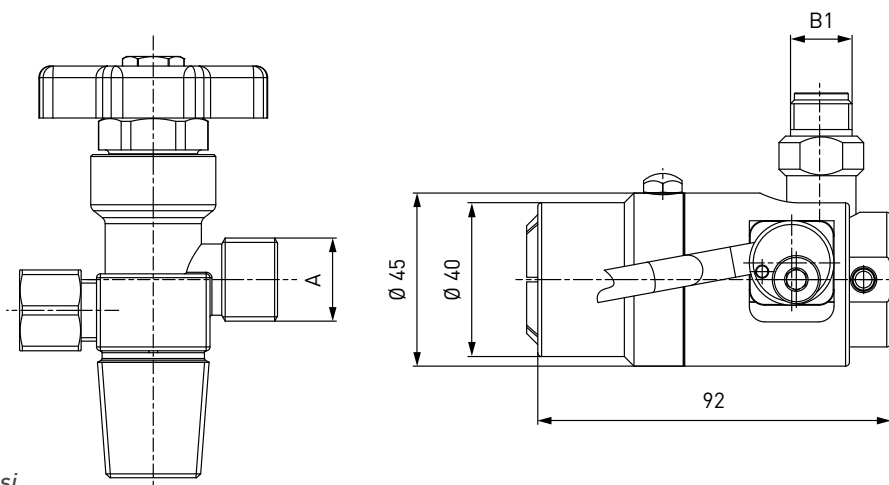
**Ordering**

**ORDERING** | Quick connector TW57 for non-residual pressure valves

approx. dimensions (mm)



Quick connector TW57 - 3,000 psi



Quick connector TW57 - 4,350 psi



Part No.	Description	Pressure (PN)	Connection A	Inlet B1 (male thread)
On request	TW57	3,000 psi	On request	On request
On request	TW57	4,350 psi	On request	On request

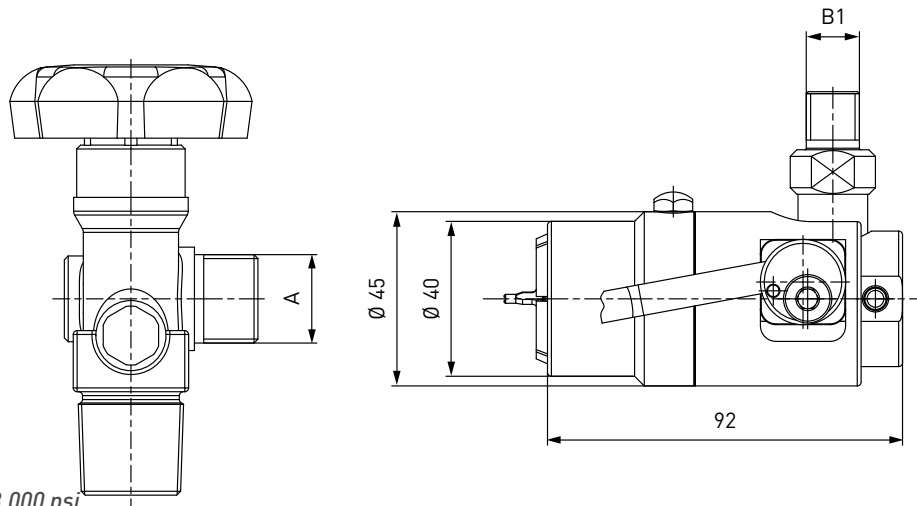
Other connector sizes and versions on request.

Required information for ordering see page 7, catalog no. 20.

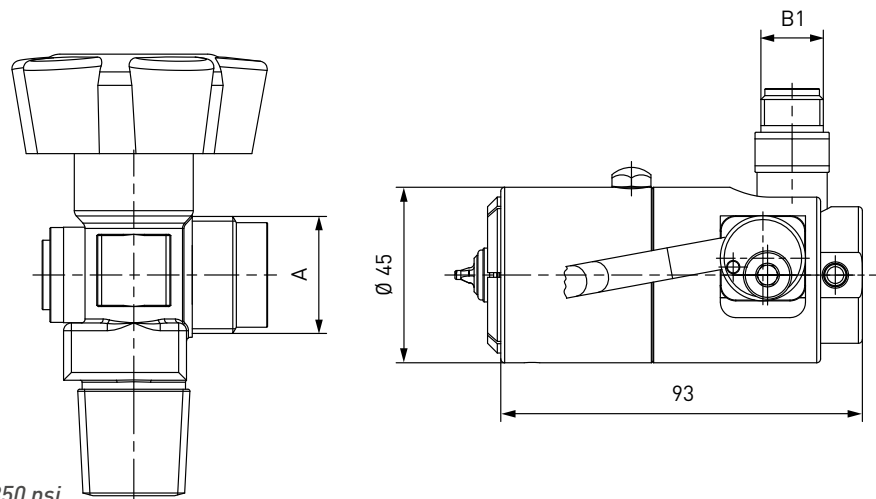
**Ordering**

**ORDERING** | Quick connector TW57 for residual pressure valves

approx. dimensions (mm)



Quick connector TW57 RPV - 3,000 psi



Quick connector TW57 RPV - 4,350 psi



Part No.	Description	Pressure (PN)	Connection A	Inlet B1 (male thread)
On request	TW57	3,000 psi	On request	On request
On request	TW57	4,350 psi	On request	On request

Other connector sizes and versions on request.

Required information for ordering see page 7, catalog no. 20.

## Accessories

### ACCESSORIES

The following accessories are available for type TW57:

#### Swivel joint TD1

The TD1 swivel joint prevents twisting of the hose and enables the axial aligning of the connector.



Part No.	Description	Inlet B1 (male thread)	Connection B2 (female thread)
On request	TD1	On request	On request

#### Quick release coupling TK350-TN350

Quick release system for a quick and easy changeover of type TW57, whether for repair, to another type or a change from residual pressure to non-residual pressure cylinder valves.



Part No.	Description	Inlet B1 (male thread)	Connection B2 (female thread)
C1-91242	TK350-TN350	M16x1.5	M16x1.5

#### Actuations

For type TW57 various actuations, e.g. handles, wire ropes, manual lever handles etc. are available in different sizes and forms. Please contact us!

#### Locking devices

Additional locking devices are also available for type TW57. Please contact us!

#### Connection for pressure gauges

Quick connector incl. pressure gauge connection and venting valve for pressure monitoring of filled gas cylinders.



Part No.	Description
On request	TW57 incl. pressure gauge connection and venting valve

## Accessories

### Adaptors

---

Adaptors for connecting the quick connector to the filling hose are available on request.

### Monel® construction

---

All pressurized parts are also available in Monel®. Please contact us!

### Spare parts

---

Various parts are available as spares for type TW57:

Part No.	Description
On request	Spare seals

## Other products

### OTHER PRODUCTS

You will find more products in our current catalog No. 20



Further information on our homepage  
[www.weh.com](http://www.weh.com)

#### » Contacting

For queries and further information, please do not hesitate to contact us.

*Manufacturer:*

**WEH GmbH Precision Connectors**

Josef-Henle-Str. 1  
89257 Illertissen / Germany

Phone: +49 7303 9609-0

Fax: +49 7303 9609-9999

Email: [sales@weh.com](mailto:sales@weh.com)

[www.weh.com](http://www.weh.com)