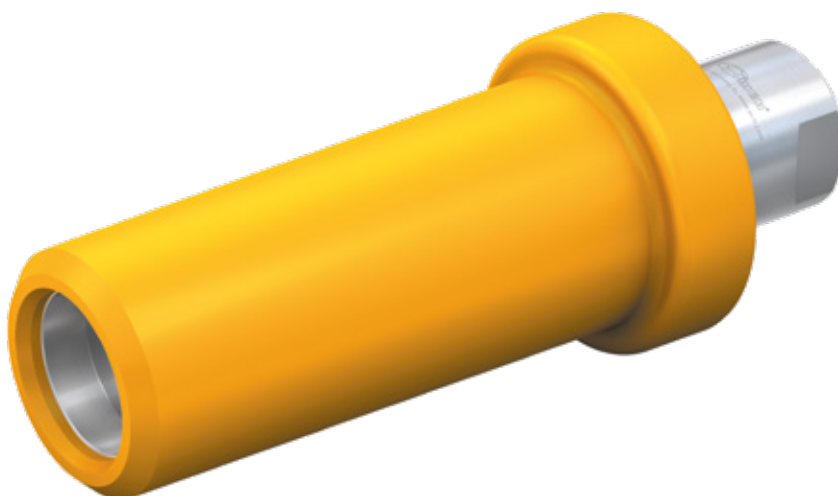


Type **TK1 CNG**

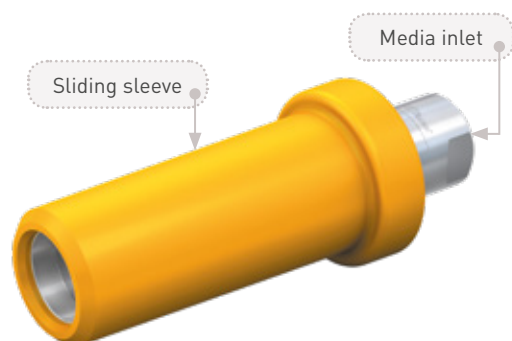
CNG Fueling Nozzle

for time filling of cars



General

DESCRIPTION



Features

- Compatible with receptacles acc. to NGV1 standard and ISO 14469-1 and 3
- Push-Pull actuation
- Integrated shut-off valve
- Plastic thermal protection
- WEH® Jaw locking mechanism
- Colour coded sliding sleeve (3,000 psi black, 3,600 psi yellow)
- High-grade materials
- Compact design

The TK1 CNG fueling nozzle is designed specifically for time filling of vehicles with 'Fuelmaker' compressors and is best suited for this application.

The TK1 CNG is now even easier to operate. The clamping jaws are opened when the nozzle is disconnected and the sliding sleeve need not being pulled back to connect the nozzle. Only push the nozzle straight onto the receptacle. The jaws of the TK1 CNG clamp onto the receptacle. While the fueling nozzle is connected, the shut-off valve in the nozzle will open - the pressure-tight connection is established. Even difficult-to-access receptacles can easily be refuelled due to the extended construction of the fueling nozzle.

Application

Fueling nozzle for CNG time filling of cars to be used with WEH® TN1 CNG receptacles acc. to NGV1 standard and ISO 14469-1 and 3. Operation only by specially trained service personnel. Not for self-service operation!

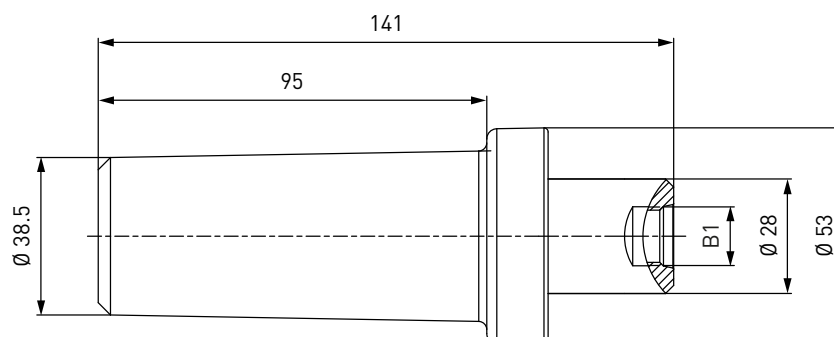
TECHNICAL DATA

Characteristic	Basic version	Options
Nominal bore DN	4 mm	On request
Pressure range	B200 acc. to ISO 14469-1 (P30 acc. to ANSI NGV1) PN = 200 bar (3,000 psi) PS = 300 bar PT = 450 bar (black) B250 acc. to ISO 14469-3 (P36 acc. to ANSI NGV1) PN = 250 bar (3,600 psi) PS = 350 bar PT = 525 bar (yellow)	
Temperature range	-40 °F up to +185 °F	On request
Material	Corrosion resistant	On request
Sealing material	Natural gas compatible	On request
Design	With plastic thermal protection	On request
Weight	Approx. 0.88 lbs.	
Registration	The products comply with ANSI NGV1	

Ordering / Accessories

ORDERING | Fueling nozzle TK1 CNG

approx. dimensions (mm)



Part No.	Description	Pressure (PN)	Inlet B1 (female thread)
C1-126000-X01	TK1 CNG	3,000 psi (black)	UNF 9/16"-18*
C1-126001-X01	TK1 CNG	3,000 psi (black)	UNF 9/16"-18* LH
C1-126003-X01	TK1 CNG	3,600 psi (yellow)	UNF 7/16"-20* LH

* acc. to SAE J1926

On request inlet port 'B1' is also available with other thread sizes.

ACCESSORIES

The following accessories are available for type TK1 CNG:

Filter TSF1 CNG (40 micron)

We recommend the installation of a type TSF1 CNG filter (see page 90, catalog no. 15) between the nozzle and the filling hose. The filter protects your system from damage due to dirt ingress.



Part No.	Description	DN	Pressure (PN)	Inlet B1	Outlet B2
C1-100700-X01	TSF1 CNG	8	3,600 psi	UNF 9/16"-18* female thread LH	UNF 9/16"-18* male thread LH

* acc. to SAE J1926

Accessories

Filling hoses

Filling hoses for connecting fueling nozzle and dispenser, complete with fittings and press-fittings supported by coil spring stubs.



Part No.	Filling hose B1/B2 (female thread)	Hose length
E68-1031-3000	UNF 9/16"-18*	3 m
E68-1031-4000	UNF 9/16"-18*	4 m
E68-1031-5000	UNF 9/16"-18*	5 m

* acc. to SAE J514, 37°

Fittings

Stainless steel fittings for connecting the media inlet 'B1' to the filling hose.

Part No.	Description	Connection fueling nozzle	Connection filling hose
W6702	Fitting	UNF 9/16"-18** male thread	UNF 9/16"-18* male thread
W6705	Fitting	UNF 9/16"-18** male thread	UNF 7/16"-20* male thread
W6927	Fitting	UNF 9/16"-18** male thread	UNF 7/8"-14* male thread
E80-561P	Fitting	UNF 9/16"-18** male thread	NPT 1/4" male thread
C1-59695	Fitting	UNF 9/16"-18** male thread LH	UNF 9/16"-18** male thread

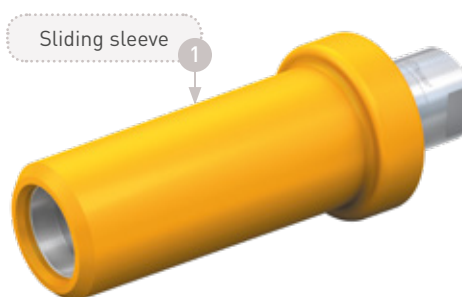
* acc. to SAE J514, 37°

** acc. to SAE J1926

Please see page 126 in catalog no. 15 onwards for a detailed overview on all available fittings.

Spare parts

Various parts are available as spares for type TK1 CNG:



Part No.	Description
C1-132266	① Spare parts set 3,000 psi (black sliding sleeve incl. disk and 3 screws)
C1-132267	① Spare parts set 3,600 psi (yellow sliding sleeve incl. disk and 3 screws)
E99-44923	Maintenance spray

Other products

OTHER PRODUCTS

You will find more products in our current catalog no. 15

Further information on our homepage
www.weh.com



Abbreviations/Definition

Explanation of abbreviations see technical appendix in the catalogue or www.weh.com

Safe product selection

Our WEH® Products are designed to be operated by qualified professional users (insofar as WEH® Products are also designed to be operated by other users in individual cases, this is explicitly stated in the corresponding operating instructions). You alone are responsible for the selection of WEH® Products and their configuration according to the requirements of your system. In doing so, please particularly consider your intended use, your performance data, your material compatibility, your system concept and your system limits as well as your technical and legal requirements for operation, handling and maintenance. The quality and safety of WEH® Products is our highest priority. For this reason, WEH® Products may not be used outside the specifications in the relevant data sheets and product descriptions. We also strongly recommend that you refrain from using third-party spare parts or a combination of WEH® Products with unsuitable third-party products. You alone are responsible for reviewing the suitability of third-party products. WEH® Products and WEH® Spare parts comply with our quality and safety standards.

Explanation on the Pressure Equipment Directive

These WEH® Products are generally and exclusively classified as pressure accessories for piping in accordance with Article 2 (5) of the Pressure Equipment Directive 2014/68/EU. These WEH® Products may not be used (i) as safety accessories or (ii) for vessels as defined by the Pressure Equipment Directive 2014/68/EU. Therefore, the application of these WEH® Products must comply with their classification as pressure accessories for piping. The assessment with regard to a different classification can, however, be made on request.

External change management

WEH reserves the right to update, optimise and adjust its products continuously. This may result in corresponding changes of the product. Customers will be informed proactively or unsolicited by WEH only in individual cases about product updates, product optimisations and/or product adaptations that have been carried out. You are free to contact WEH at any time to request information about any product updates, product optimisations and/or product adjustments.

© All rights reserved, WEH GmbH. Any unauthorized use is strictly forbidden. Subject to alteration.
 No liability will be assumed for any content. Herewith previous versions are no longer valid.

» Contact

For queries and further information, please do not hesitate to contact us.

Manufacturer:

WEH GmbH Gas Technology

Josef-Henle-Str. 1
 89257 Illertissen / Germany

Phone: +49 7303 95190-0
 Fax: +49 7303 95190-9999

Email: ngvsales@weh.com
www.weh.com

Distributor US:



WEH Technologies Inc.

24903 Laguna Edge Drive
 Katy, TX 77494 / USA

Phone: +1 832 331 0021
 Fax: +1 281 712 2664

Email: sales@weh.us
www.weh.us